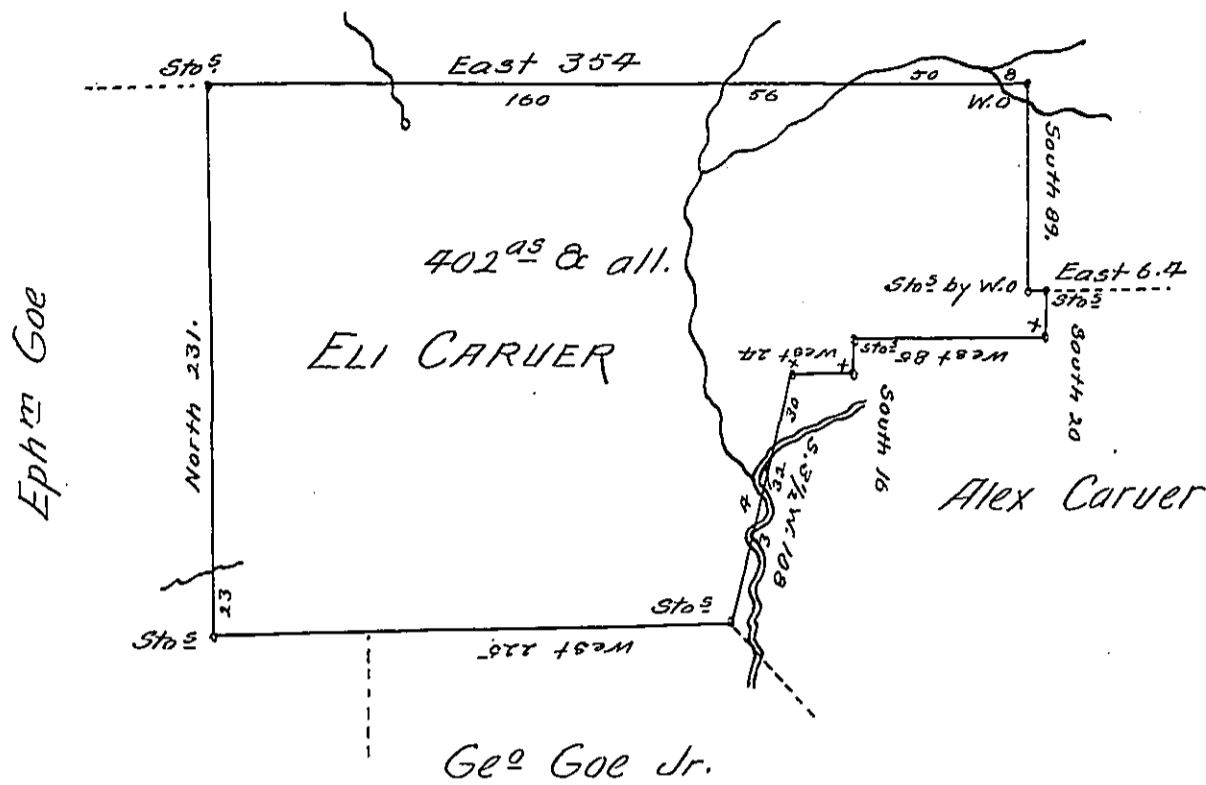


W<sup>m</sup> Carr or Con



Situate on the waters of Sandy Creek in Wharton township Fayette County and Surveyed the 26<sup>th</sup> day of August 1835, In pursuance of a Warrant in the name of Eli Carver for 400<sup>as</sup> dated the 16<sup>th</sup> day of February 1794,

There was a small clearing made and a Cabbin raised on this tract many years ago, but has not been Occupied for—years

F. Lewis D.S.

To Jacob Spangler Esquire  
Surveyor General

IN TESTIMONY that the above is a copy of the original remaining on file in the Department of Internal Affairs of Pennsylvania, made conformably to an Act of Assembly approved the 16th day of February, 1833, I have hereunto set my Hand and caused the Seal of said Department to be affixed at Harrisburg, this thirteenth day of May 1904

*Joseph P. Brown*  
Secretary of Internal Affairs.